

In Response to God
Activities for the Week of August 4, 2024

Today's Lectionary: 2 Samuel 11:26-12:13a; Psalm 51:1-12; Ephesians 4:1-16; John 6:24-35

Sunday	August 4	9:00 am – Church School 10:00 am – Worship Service 11:00 am – Refreshments and Fellowship
Monday	August 5	7:30 am-7 pm – Houston Dragon Academy
Tuesday	August 6	7:30 am-7 pm – Houston Dragon Academy 10 am-2 pm – CCSC Food Collection 4 pm – Strength Training Class
Wednesday	August 7	7:30 am-7 pm – Houston Dragon Academy
Thursday	August 8	7:30 am-7 pm – Houston Dragon Academy 4 pm – Strength Training Class
Friday	August 9	7:30 am-7 pm – Houston Dragon Academy 11:30 am – Longfellow Luncheon
Saturday	August 10	9 am-5 pm – Houston Dragon Academy
Sunday	August 11	9:00 am – Church School 10:00 am – Worship Service 11:00 am – Refreshments & Fellowship

ST. LUKE'S STAFF

Pastor	The Rev. W. Scott Harbison
Parish Associate	The Rev. Dr. Bill Wade
Parish Associate	The Rev. Lauren Suba
Director of Music-Organist/Choirmaster	Marvin Gaspard
Business Manager	Patti Ernst
Assistant to Head of Staff	Mary Ann White
Artists in Residence	Sarah Bunk, Ann Guercio, & Laura Smith



St. Luke's Presbyterian Church
8915 Timberside Drive
Houston, TX 77025-3738
713.667.6531
www.stlukespres.org

St. Luke's Presbyterian Church
August 4, 2024

The Order of Worship

August 4, 2024

ELEVENTH SUNDAY AFTER PENTECOST

We joyfully greet each other and share the gifts of friendship and love.

GATHERING AROUND THE WORD

TOLLING

Please begin quiet preparation for worship as the Tolling begins.

PRELUDE

Amanda Thorp, pianist

How Firm a Foundation

American folk melody

WELCOME

✦ PASSING OF THE PEACE

✦ OPENING HYMN 361

FOUNDATION

How Firm a Foundation

CONFESSION OF SIN AND ASSURANCE OF FORGIVENESS

Congregation: Thanks be to God.

HEARING THE WORD

SCRIPTURE READING (OT p. 520)

Reading today, Kenneth Russell

Psalms 51:1-12

SCRIPTURE READING (OT p. 285)

2 Samuel 11:26-12:13a

REFLECTION ON THE WORD

“A Lesson for Us All”

Rev. W. Scott Harbison

RESPONDING TO THE WORD

✦ APOSTLE’S CREED (in unison)

I believe in God the Father Almighty, Maker of heaven and earth. And in Jesus Christ his only Son our Lord, who was conceived by the Holy Ghost, born of the Virgin Mary, suffered under Pontius Pilate, was crucified, dead, and buried; he descended into hell; the third day he rose again from the dead; he ascended into heaven, and sitteth on the right hand of God the Father Almighty; from thence he shall come to judge the quick and the dead. I believe in the Holy Ghost; the holy catholic church; the communion of saints; the forgiveness of sins; the resurrection of the body; and the life everlasting. Amen.

PASTORAL PRAYER

OFFERTORY

’Tis So Sweet to Trust in Jesus
William Kirkpatrick, arr. Cindy Berry

✦ DOXOLOGY 592

✦ HYMN OF PREPARATION 379

SOLID ROCK

My Hope Is Built on Nothing Less

SACRAMENT OF THE LORD’S SUPPER

Minister: The Lord be with you.

People: And also with you.

Minister: Lift up your hearts!

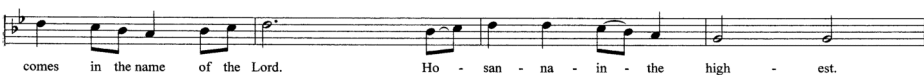
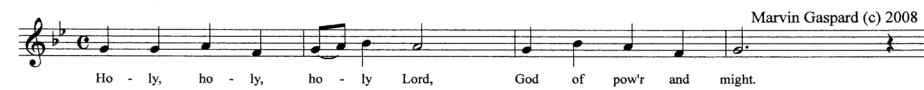
People: We lift them up to the Lord.

Minister: Let us give thanks to the Lord our God.

People: It is right to give our thanks and praise.

The prayer continues...

The congregation sings...



COMMUNION

Hymn
Mark Kellner

BENEDICTION

POSTLUDE

The Solid Rock
William Bradbury, arr. Cindy Berry



Welcome to St. Luke’s Presbyterian Church! If you are looking for a church home in Houston, we invite you to unite with St. Luke’s. New members are welcomed by the Session following worship each Sunday.

Joys and Concerns are an opportunity to share a need for prayers of thanksgiving or intercession with the congregation. You will have an opportunity to mention your joys and concerns verbally at the time for Pastoral Prayer.

Sunday School: Children’s Sunday School meets at 9 a.m. in Room 115 with Don Mims teaching the class. **Adult Sunday School** is taking a summer vacation from their studies, but will continue to meet Sundays at 9:00 a.m. for fellowship. **Our Youth Group** meets every other Sunday at 9 a.m.

Sunday’s Music: Today we will sing two familiar hymns that will also be played as instrumental arrangements of those same hymns. Thank you, Amanda, for leading us in worship today, and for sharing your gifts with us!

An invitation to Shabbat service: A friend of St. Luke’s, Michael Brown, visits the Adult Sunday School class regularly and provides a Jewish perspective to their study. Michael has invited class members to attend Congregation Emanu El on Saturday, August 10, for morning Shabbat service at 10:30 a.m. The group plans to caravan to Congregation Emanu El (1500 Sunset Blvd.) at 10 a.m. from the St. Luke’s parking lot. Speak to Michael, Marty Moore or Marilyn McHenry for more information or to sign up to attend.

Our 17th annual Longfellow Luncheon is on Friday, August 9th.

St. Luke’s will provide lunch from Raising Cane’s for teachers and staff. We would like to provide several salads to offer a vegetarian choice for lunch. If you can help with a salad, call the church office or speak to Rev. Harbison or Lisa Simmons.

We are collecting \$10-\$20 gift cards for door prizes, candy bars for a take away treat, and classroom school supplies. The Teacher Wish List includes: pencils, highlighters, Expo dry erase markers, and antibacterial wipes. You can drop off donations on Sunday morning or during the week.

Our Chancel Choir is on a well deserved vacation for several weeks. During their absence, soloists, and guest musicians will be a part of worship. We appreciate our wonderful musicians. Choir will return to the loft September 8.

FRIENDS OF MUSIC was established to provide special vocalists and instrumentalists throughout the year, and to supplement funding for our choir section leaders. Gifts may be given in honor or memory of loved ones, or in celebration of anniversaries, birthdays, and special milestone events. For more information, contact Marvin Gaspard at mjgaspard@sbcglobal.net.