

In Response to God  
Activities for the Week of August 18, 2024

Today's Lectionary: 1 Kings 2:10-12; 3:3-14; Psalm 111; Ephesians 5:15-20; John 6:51-58

Sunday	August 18	9:00 am – Church School 10:00 am – Worship Service 11:00 am – Refreshments and Fellowship
Monday	August 19	2-7 pm – Houston Dragon Academy
Tuesday	August 20	2-7 pm – Houston Dragon Academy 10 am-2 pm – CCSC Food Collection 4 pm – Strength Training Class 6:30 pm – Spirits & Spirituality
Wednesday	August 21	2-7 pm – Houston Dragon Academy
Thursday	August 22	2-7 pm – Houston Dragon Academy 4 pm – Strength Training Class
Friday	August 23	2-7 pm – Houston Dragon Academy
Saturday	August 24	9 am-5 pm – Houston Dragon Academy
Sunday	August 25	9:00 am – Church School 10:00 am – Worship Service 11:00 am – Refreshments & Fellowship

ST. LUKE'S STAFF

Pastor	The Rev. W. Scott Harbison
Parish Associate	The Rev. Dr. Bill Wade
Parish Associate	The Rev. Lauren Suba
Director of Music-Organist/Choirmaster	Marvin Gaspard
Business Manager	Patti Ernst
Assistant to Head of Staff	Mary Ann White
Artists in Residence	Sarah Bunk, Ann Guercio, & Laura Smith



St. Luke's Presbyterian Church  
8915 Timberside Drive  
Houston, TX 77025-3738  
713.667.6531  
www.stlukespres.org

St. Luke's Presbyterian Church  
August 18, 2024

# The Order of Worship

August 18, 2024

## TWENTIETH SUNDAY AFTER PENTECOST

*We joyfully greet each other and share the gifts of friendship and love.*

### GATHERING AROUND THE WORD

#### TOLLING

*Please begin quiet preparation for worship as the Tolling begins.*

#### PRELUDE

Laura Smith, harpist

Melodie

David Ashley White

#### WELCOME

#### ✦ PASSING OF THE PEACE

#### ✦ OPENING HYMN 288

ELLACOMBE

I Sing the Mighty Power of God

#### CONFESSION OF SIN AND ASSURANCE OF FORGIVENESS

**Congregation: Thanks be to God.**

### HEARING THE WORD

#### SCRIPTURE READING (NT p. 194)

Reading today, Kyra Hebbert

Ephesians 5:15-20

#### SCRIPTURE READING (NT p. 98)

John 6:51-58

#### REFLECTION ON THE WORD

Rev. W. Scott Harbison

“What It Is. What It Ain’t.”

### RESPONDING TO THE WORD

#### ✦ APOSTLE’S CREED (in unison)

I believe in God the Father Almighty, Maker of heaven and earth. And in Jesus Christ his only Son our Lord, who was conceived by the Holy Ghost, born of the Virgin Mary, suffered under Pontius Pilate, was crucified, dead, and buried; he descended into hell; the third day he rose again from the dead; he ascended into heaven, and sitteth on the right hand of God the Father Almighty; from thence he shall come to judge the quick and the dead. I believe in the Holy Ghost; the holy catholic church; the communion of saints; the forgiveness of sins; the resurrection of the body; and the life everlasting. Amen.

#### SHARING OF JOYS AND CONCERNS

#### PASTORAL PRAYER

#### OFFERTORY

Janet Bardin, Randall Bardin,  
Jadon Campos, and Ann Guercio

Come, Christians, Join to Sing

Spanish folk melody  
Arr. Gordon Young (1919-1998)

#### ✦ DOXOLOGY 592

#### ✦ HYMN OF PREPARATION 505

ST. FLAVIAN

Be Known to Us In Breaking Bread

#### SACRAMENT OF THE LORD’S SUPPER

Minister: The Lord be with you.

**People: And also with you.**

Minister: Lift up your hearts!

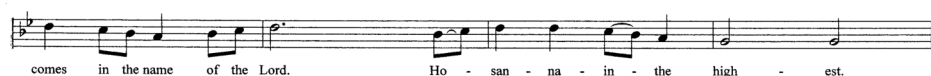
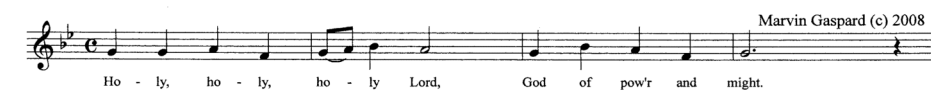
**People: We lift them up to the Lord.**

Minister: Let us give thanks to the Lord our God.

**People: It is right to give our thanks and praise.**

The prayer continues...

The congregation sings...



#### COMMUNION

Janet Bardin, Alana Glover & Ann Guercio

His Eye Is on the Sparrow

Charles Gabriel (1856-1932)

#### PEOPLE’S RESPONSE

For Thine Is the Kingdom  
From *The Lord’s Prayer*, Albert Hay Malotte (1895-1964)

#### BENEDICTION

#### POSTLUDE

DUKE STREET

Jesus Shall Reign Where’er the Sun  
John Hatton (1710-1793), arr. Marvin Gaspard

**Welcome to St. Luke’s Presbyterian Church!** If you are looking for a church home in Houston, we invite you to unite with St. Luke’s. New members are welcomed by the Session following worship each Sunday.

**Joys and Concerns** are an opportunity to share a need for prayers of thanksgiving or intercession with the congregation. You will have an opportunity to mention these verbally at the time for Sharing of Joys and Concerns.

**Sunday School: Children’s Sunday School** meets at 9 a.m. in Room 115 with Don Mims teaching the class. **Adult Sunday School** is taking a summer vacation from their studies, but will resume in September. **Our Youth** will resume meeting every other Sunday, beginning September 8 at 9:00 a.m.

**The Adult Sunday School Class:** David Elledge will begin a study of 2nd Timothy when class resumes in September. The class is continuing to meet for fellowship and coffee on Sunday mornings at 9 a.m. You are invited to join them in the Library.

**The flowers in our sanctuary this morning** are given by Linda Wiley to the glory of God and in memory of her mother, Lois Angle, and in honor of her grandson Luke Wiley’s birthday today.

**Our 17th annual Longfellow Teacher Luncheon** was held last Friday. St. Luke’s provided lunch from Raising Cane’s and a variety of salads. Thanks to those who provided salads which were very popular. And, because of your generous donations, teachers were able to “shop” for school supplies to supplement their classroom resources and all the teachers and staff received a gift card as a door prize.

**Our Chancel Choir** is on a well deserved vacation for several weeks. During their absence, soloists, and guest musicians will be a part of worship. We appreciate our wonderful musicians. Choir will return to the loft September 8.

**Spirits & Spirituality** will meet on Tuesday, August 20, at 6:30 p.m. at Casa Dominguez, 5213 Cedar Street in Bellaire. It’s a great opportunity for fellowship and discussion of Rev. Harbison’s topic for the evening. A sign up sheet is available in the Narthex or call the church office to RSVP.

**Refreshments and Fellowship** after worship are long standing traditions at St. Luke’s, giving us an opportunity to get acquainted and share church and family news. If you are visiting St. Luke’s, please join us after worship in Room #123 and discover one of St. Luke’s greatest assets, the warm friendliness of our church family.

**Please take a moment** to use the friendship pads in your pew to let us know you were here and to make note of those sitting near you. If you would like to receive our email newsletter, *The Wednesday Word*, leave us your email address and we will add it to the circulation list.